

# DREEVO<sub>3</sub> / DREEVO LITE

## HOW TO ACCESS THE INTERNAL CONSOLE

04/07/2011



Version 1.1

The Dreevo3/Dreevo3 Lite (SDP5) embeds a Windows RNDIS driver meaning that it will be recognized if connected to your Windows Computer. Here are the steps to follow in order to gain access to the console.

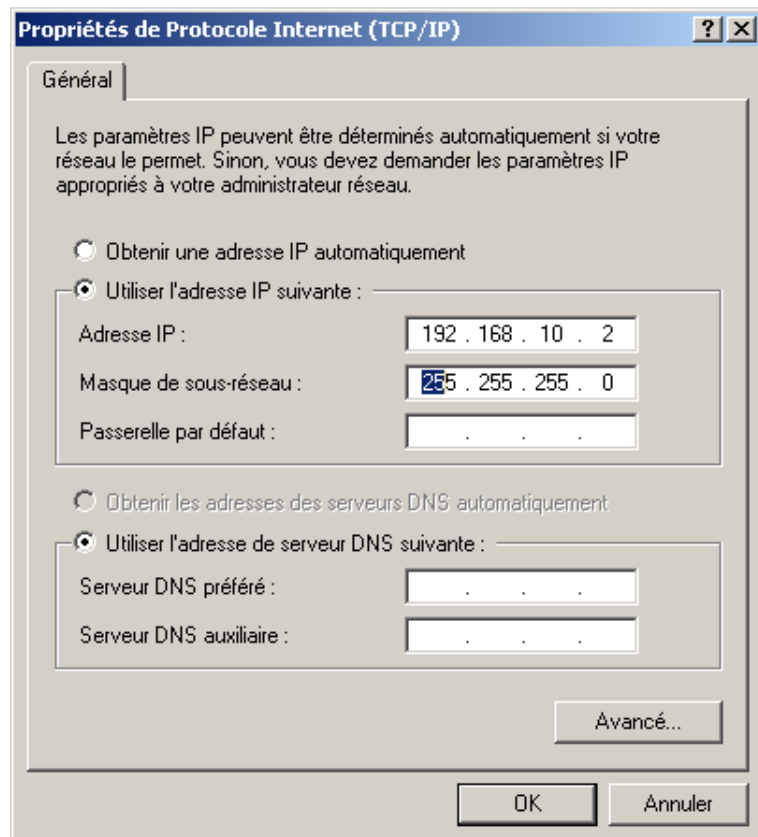
## Windows requirements

- PuttY (<http://the.earth.li/~sgtatham/putty/latest/x86/putty-o.60-installer.exe>)
- Windows driver (linux\_rndis.inf)

## Accessing the console on Windows

- Install the RNDIS driver (right click then choose install).
- Connect your device to your Windows computer using the USB adapter.
- Configure the interface. Go to Control Panel\Network and Sharing Center. Here you should find a new Ethernet interface identified as "Linux USB Ethernet/RNDIS Gadget". You have to change the properties for this interface. Enter the following IPv4 configuration:

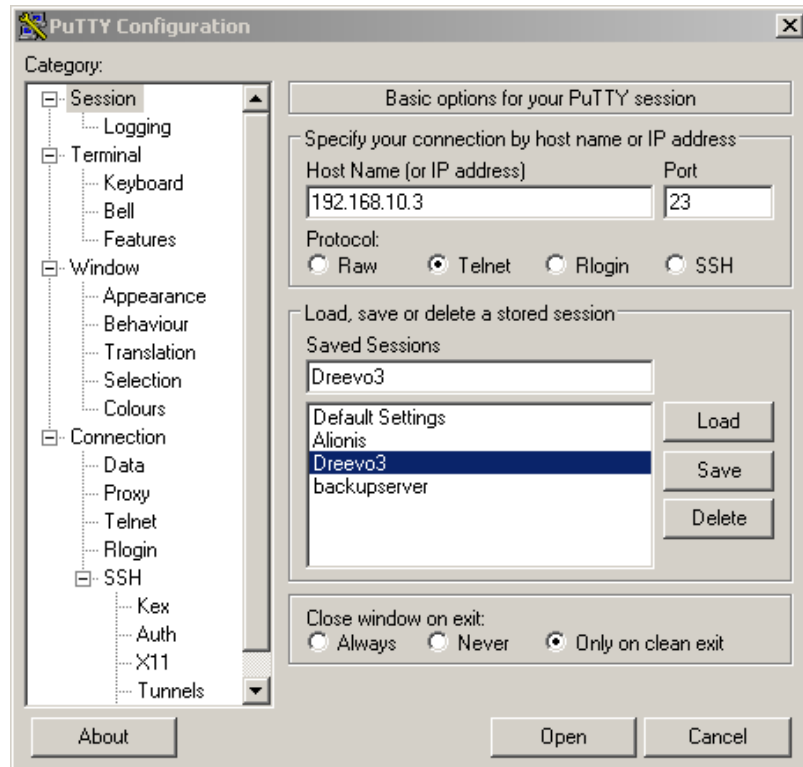
IP:  
192.168.10.2  
Subnet mask:  
255.255.255.0



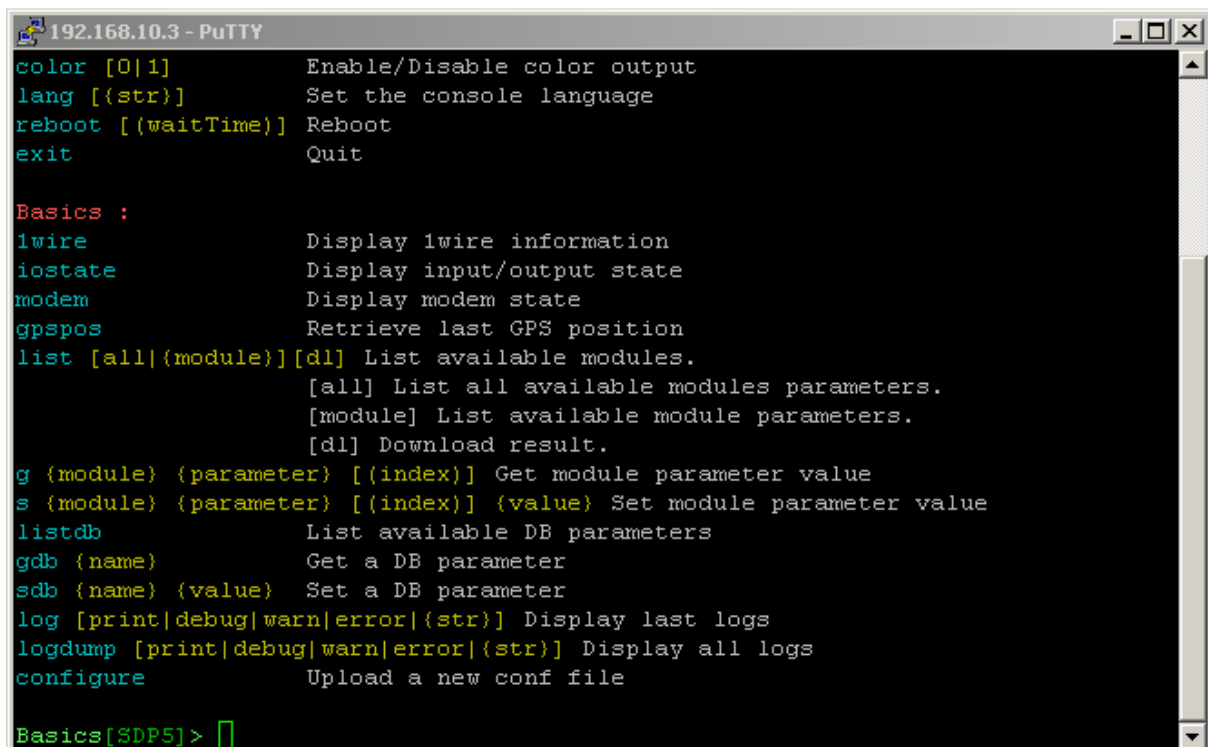
- Save and close.

- o Download and install PUTTY. Create a new session called Dreevo3 with the following settings :

Host Name: 192.168.10.3  
 Port: 23  
 Connection: Telnet  
 Saved Session: Dreevo3



In the Terminal category (in the list on the left side of the window) check the Implicit CR in every LF checkbox. Switch back to the Session category, hit the Save button and click Open.



Once the connection is created you can also access the console through an internet browser using link <http://192.168.10.3>

```
Builtins
cversion Console version
lang Set the console language
reboot Reboot

Basics
1wire Display 1wire information
iostate Display input/output state
modem Display modem state
gpspos Retrieve last GPS position
list List available modules.\n[all] List all available modules parameters.\n[module] List available module parameters.\n[d]
Download result.
g Get module parameter value
s Set module parameter value
listdb List available DB parameters
gdb Get a DB parameter
sdb Set a DB parameter
logdump Display all logs
configure Upload a new conf file

Advanced
ip Display all ip addresses. If str, display only str address.
stats Display stats.
skey Update|Delete server key
ukey Update|Delete user key
stopsoft Stop the software
usercpn List user components
update Upload an update package
sysupdate Update the system
restore Restore parameters of write, db or pdm
restoreFull Restore device to the initial configuration state
version Display software/hardware version
```

## Linux requirements

- User needs the rights to configure a network interface.

## Accessing the console on Linux

- Connect your device to your Linux computer using the USB adapter.
- Open a terminal and run (with the appropriate privileges):  
**ifconfig usb0 192.168.10.5 netmask 255.255.255.0 up**

You can now access the console using telnet by running:

```
telnet 192.168.10.3
```

Or you can access it using a web browser at the following address:

```
http://192.168.10.3
```

## Linux tip

You can automatically configure the network interface when the device is plugged in using the following command in a separate terminal:

```
watch ifconfig usb0 192.168.10.5 netmask 255.255.255.0 up
```