

C4evo – CONNECT THE CONSOLE

V 1.0

06/07/2011



The C4evo embeds a Windows RNDIS driver meaning that it will be recognized if connected to your Windows Computer. Here are the steps to follow in order to gain access to the console.

1. Requirements

- PUTTY (<http://the.earth.li/~sgtatham/putty/latest/x86/putty-o.60-installer.exe>)
- RNDIS driver ((ftp://update:f3f2gth@support.mobile-devices.fr/UPD_C4E/linux_rndis_full.zip))

2. Accessing the console

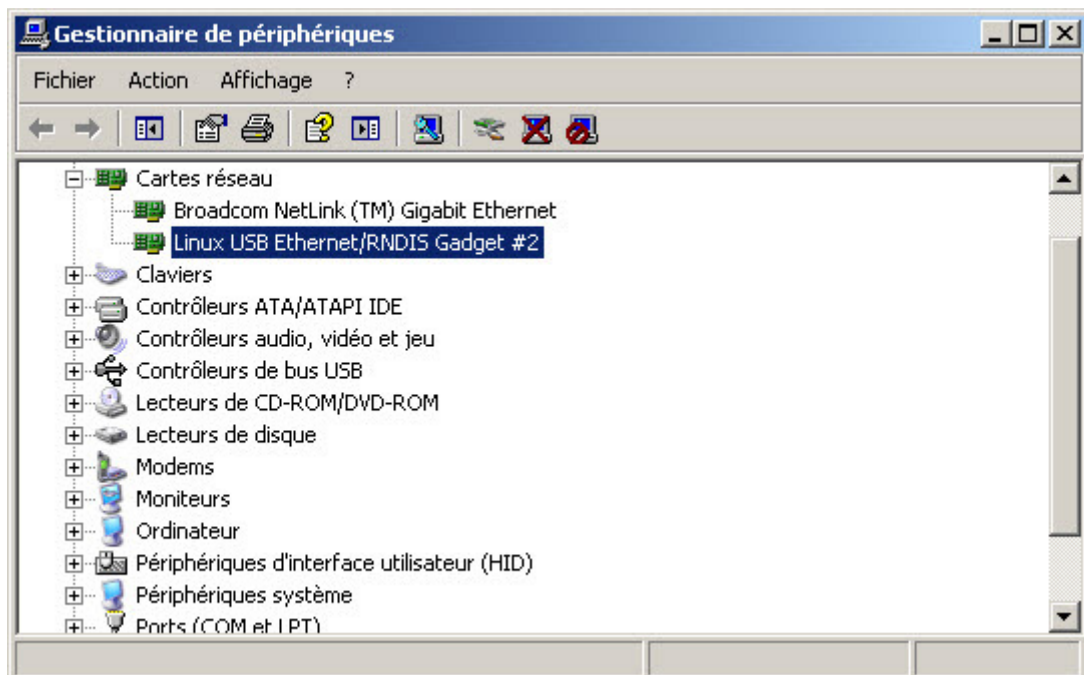
On some software pre-releases the USB is configured in host mode instead of device mode. This means you won't be able to access the console via an USB cable until you change this parameter.



Set the parameter **usb.defaultUsbMode** to **1** for **USB host** mode.
Set the parameter **usb.defaultUsbMode** to **2** for **USB device** mode.

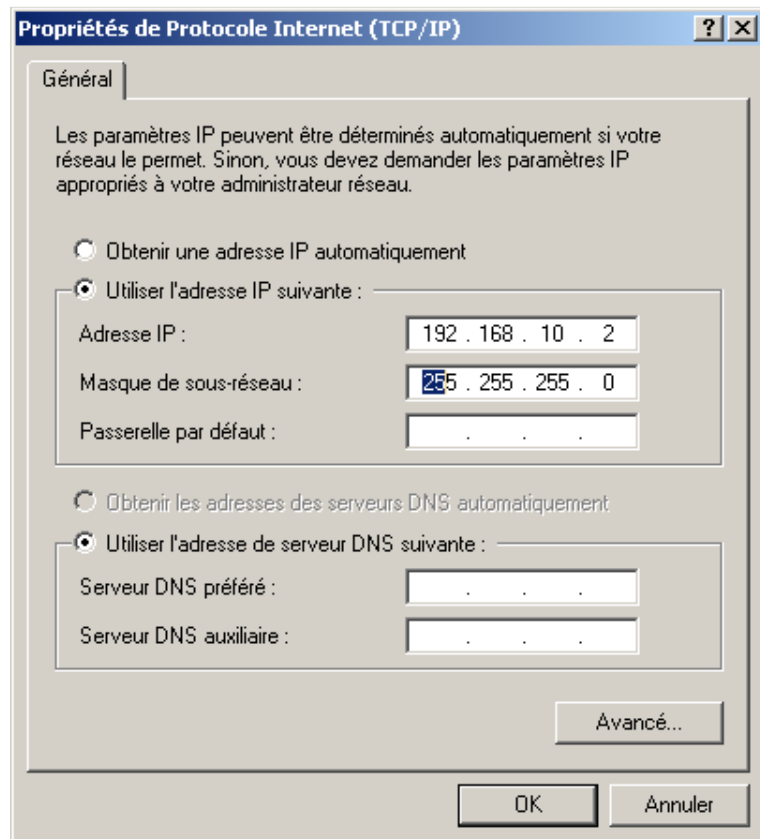
To change this parameter you can either send the SMS command **set,usb.defaultUsbMode,2** or use an IBD cable.

1. Right click on the file `linux_rndis_full.inf` and choose Install.
2. Connect the C4E to the computer using a mini USB to USB cable.
3. A new Ethernet interface identified as "Linux USB Ethernet/RNDIS Gadget" should be displayed in the Devices Manager.



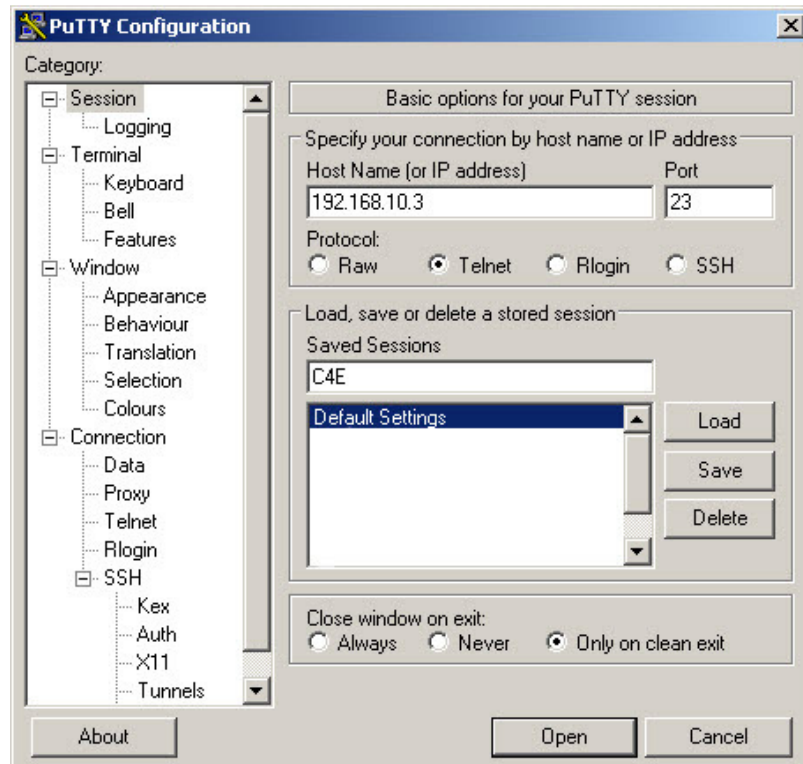
4. Go to Control Panel\Network and Sharing Center and configure the new interface. Enter the following IPv4 configuration:

IP:
192.168.10.2
Subnet mask: 255.255.255.0



5. Save and close.
6. Launch PuTTY. Create a new session called C4E with the hereinafter settings :

Host Name: 192.168.10.3
Port: 23
Connection: Telnet
Saved Session: C4E



In the Terminal category (in the list on the left side of the window) check the Implicit CR in every LF checkbox. Switch back to the Session category, hit the Save button and click Open.

```

192.168.10.3 - PuTTY
lang [{str}]          Set the console language
reboot [(waitTime)]  Reboot
completion           Activate advanced completion
exit                 Quit

Basics :
1wire                Display 1wire information
iostate              Display input/output state
modem                Display modem state
gpspos               Retrieve last GPS position
list [all|{module}][dl] List available modules.
                    [all] List all available modules parameters.
                    [module] List available module parameters.
                    [dl] Download result.
g {module} {parameter} [(index)] Get module parameter value
s {module} {parameter} [(index)] {value} Set module parameter value
listdb               List available DB parameters
gdb {name}           Get a DB parameter
sdb {name} {value}   Set a DB parameter
log [print|debug|warn|error|{str}] Display last logs
logdump [print|debug|warn|error|{str}] Display all logs
configure            Upload a new conf file

Basics> █

```

Once the connection is created you can also access the console through an internet browser via the URL <http://192.168.10.3>.

```

Builtins
cversion Console version
lang Set the console language
reboot Reboot

Basics
1wire Display 1wire information
iostate Display input/output state
modem Display modem state
gpspos Retrieve last GPS position
list List available modules.\n[all] List all available modules parameters.\n[module] List available module parameters.\n[dl]
Download result.
g Get module parameter value
s Set module parameter value
listdb List available DB parameters
gdb Get a DB parameter
sdb Set a DB parameter
logdump Display all logs
configure Upload a new conf file

Advanced
ip Display all ip addresses. If str, display only str adress.
stats Display stats.
skey Update|Delete server key
ukey Update|Delete user key
stopsoft Stop the software
usercpn List user components
update Upload an update package
sysupdate Update the system
restore Restore parameters of write, db or pdm
restoreFull Restore device to the initial configuration state
version Display software/hardware version

```